

The BRUNSWICK



The Brunswick enters into a formal hallway that is adjacent to a spacious sunroom, perfect for a reading room, home office or craft room. The expansive kitchen and lounge sit beneath an open raked ceiling offering both space and light.

A feature double sliding door opens to the undercover terrace creating a seamless indoor/outdoor transition. The master retreat has a luxurious walk-in-robe accompanied by a large spacious ensuite and shower. This home is available with a one-and-a-half garage or optional double garage.



LAURIETON
RESIDENTIAL RESORT



The BRUNSWICK

House Area: 158m²

Floor area, 1.5 garage, covered terrace, and porch

Bathrooms: 2

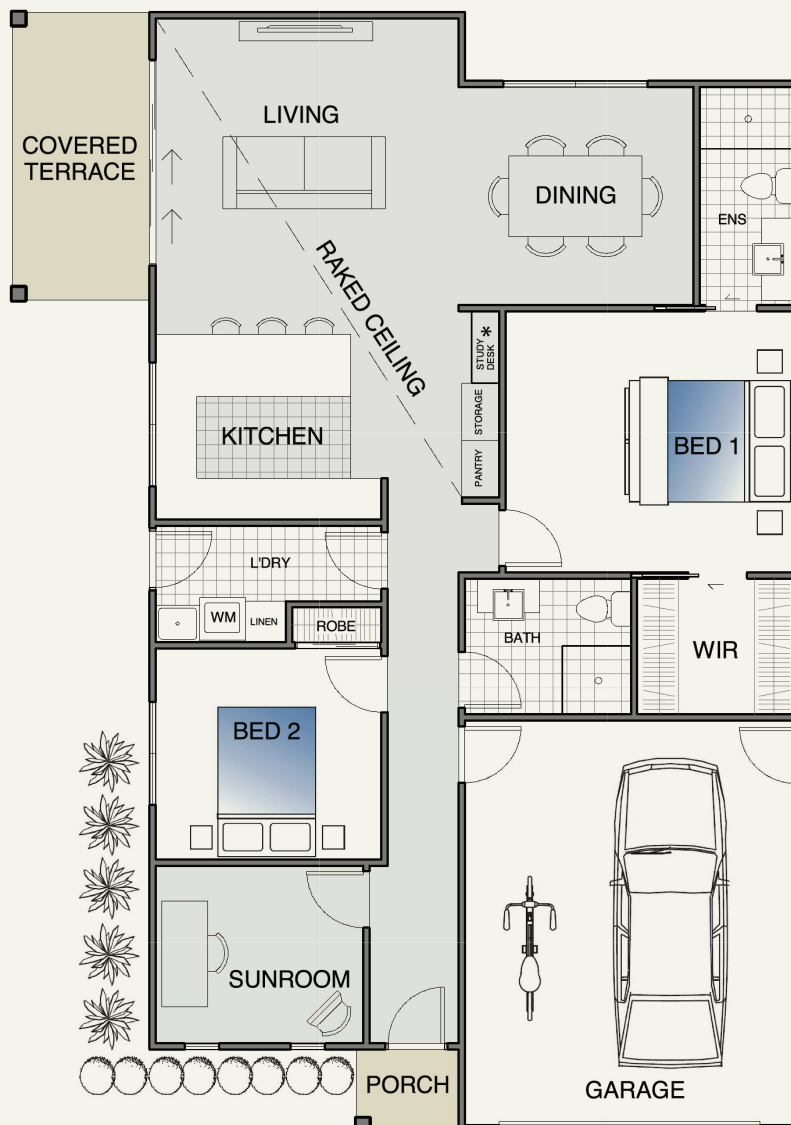
Garage: 1.5 or optional Double

Dimensions:

- Living/Kitchen: 7.3 m x 4.4 m
- Dining: 3.5 m x 3.2 m
- 1.5 Garage: 5.9 m x 4.8 m
- Covered Terrace: 4.2 m x 2.0 m
- Bedroom 1: 4.2 m x 3.8 m plus Walk in Robe
- Bedroom 2: 3.2 m x 3.0 m plus Robe
- Sunroom: 3.0 m x 2.6 m

Highlights:

- Raked Ceiling
- Separate Living & Dining
- Spacious, Modern Kitchen
- Walk in Robe
- Office Nook



* Study Desk can be upgraded to additional storage

BOTANIC DRIVE, LAKEWOOD NSW
PLEASE CALL 1300 55 70 75 OR VISIT
WWW.LAURIETONRESORT.COM.AU

For marketing purposes only. The actual house and the plans at the sales office may in some instances have a variation in design and in some areas and dimensions.